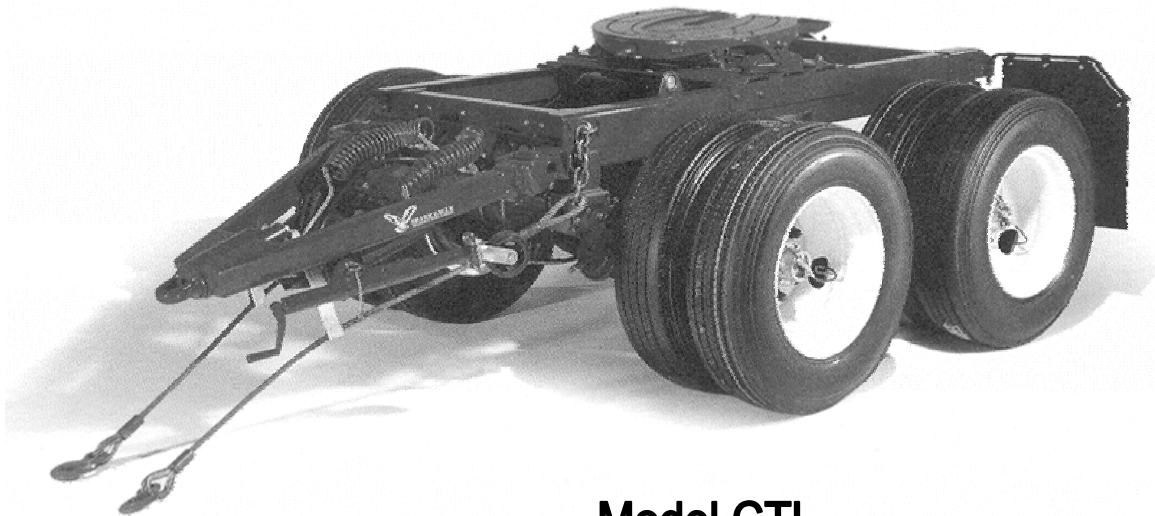




Tandem Converter Dolly



Model CTL

The **Silver Eagle** tandem converter dolly supports the heaviest payloads. Its durable construction delivers a stable, smooth ride that lets you safely transport heavy products and minimize the impact on your equipment.

Highest Stability

Our "no-slack" suspension improves roll stability.

Lowest Maintenance

The bolted frame and drawbar eye are easily repaired - without welding. There are no radius rods to adjust or to wear.

Longest Life

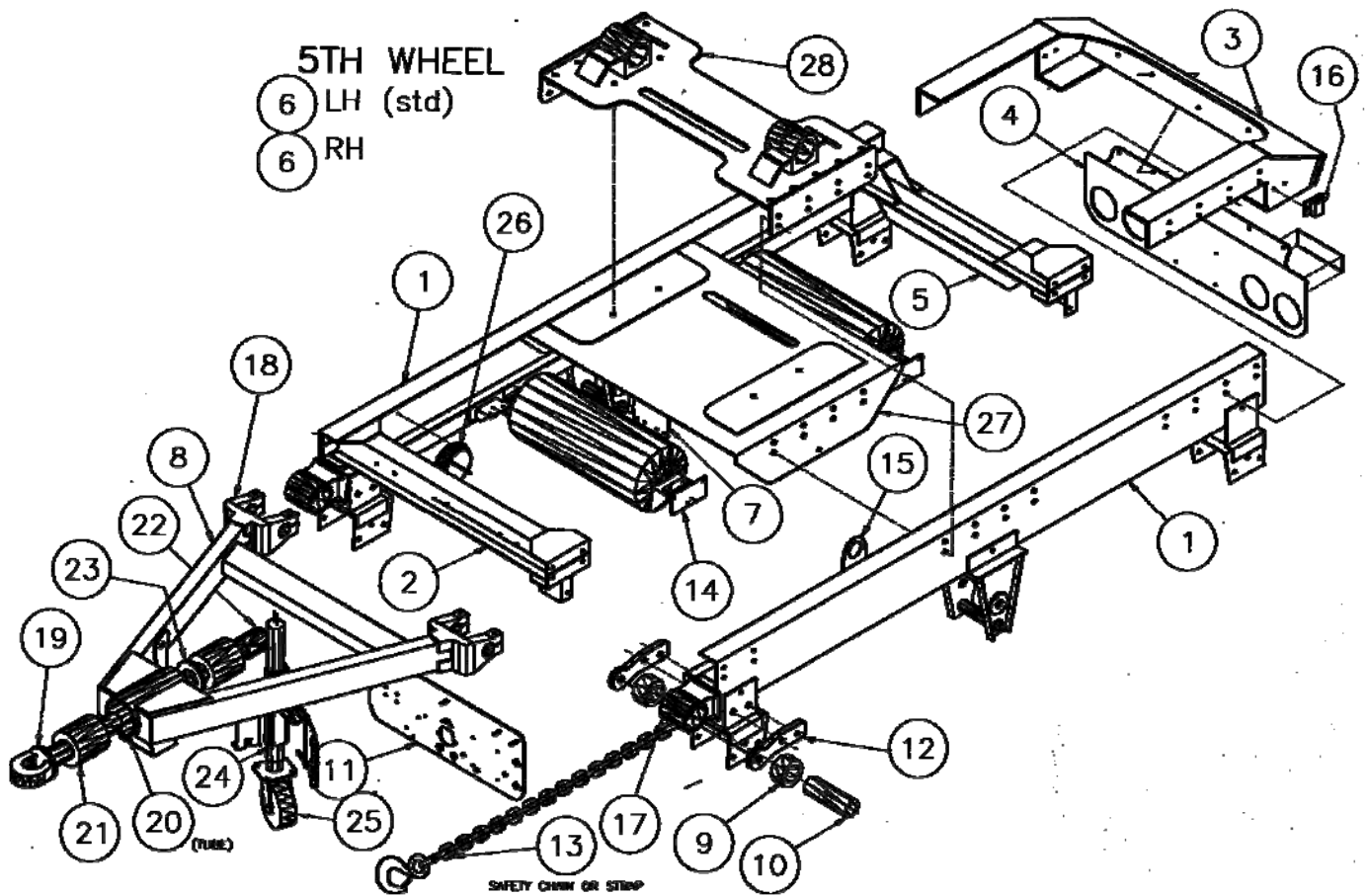
Durable steel rails and crossmembers support maximum load weight. An E-Coat primer protects against corrosion and provides a base for a durable, long-lasting finish.

Smoothest Ride

The dual-stage spring suspension and drawbar eye are mounted in rubber or urethane blocks minimizing wear on components and ensuring a smooth, quiet ride.



Tandem Converter Dolly Assembly



Exploded Parts View



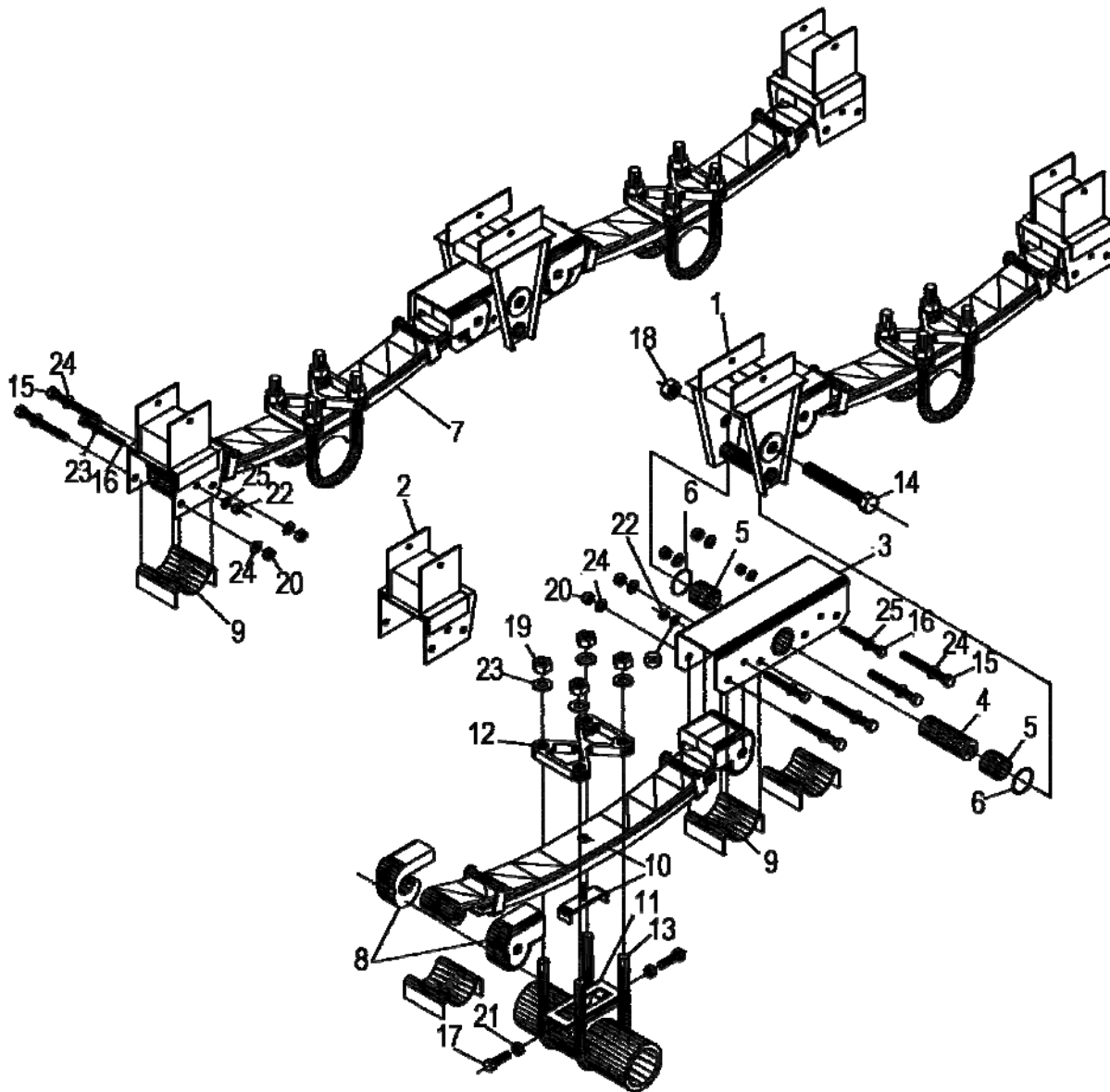
Tandem Converter Dolly Assembly

TANDEM CONVERTER DOLLY - ASSEMBLY MODEL CTL

Item	Part Nbr.	Description
1	QUOTE	SIDEMEMBER WELDMENT, LH, CTL
1	QUOTE	SIDEMEMBER WELDMENT, RH, CTL
2	10961	CROSSMEMBER, FRONT, CTL
3	11111	RAMP WELDMENT, CTL
4	10566	TAILPLATE, CTL
5	11120	CROSSMEMBER, REAR, CTL
6	10979	5TH WHEEL, RH, HOLLAND 3500
6	11315	5TH WHEEL, LH, HOLLAND 3500
NS	Quote	DRAWBAR KIT
9	1595	BUSHING, RUBBER, HINGE
9	12169	BUSHING, URETHANE, HINGE
10	4172	PIN, HINGE
11	10956	VALVE PLATE, W/PSI, BENDIX
12	10554	ANCHOR, SAFETY STRAP
14	11021	BRACKET, AIR TANK, CTL
15	11038	BRACKET, ABS LIGHT, CTL
16	1921	FLAPHOLDER BRACKET
17	1233	HINGE BRACKET
18	1663	HINGE, 4X2 TUBE
19	1171	EYE & SHANK, 3/8" SHANK, HRND EYE
20	1159	SHOCK HOUSING, HD
21	1157	BUSHING, SHOCK ABSORBER, RUBBER
21	12171	BUSHING, SHOCK ABSORBER, URETHANE
22	15315	NUT, SHANK, HEX
23	15660	WASHER, SHANK, HEX
24	5921	JACK ASSY, SWIVEL, W/CASTER
25	1326	CASTER W/6" WHEEL, JACK
NS	8298	FLAP HANGER, A35RL, ARM ONLY
NS	7686	FLAP, 24 X 27, LH, ANTISAIL
NS	3487	FLAP, 24 X 27, RH, ANTISAIL
26	1930	REGISTRATION BOX, W/SPRING, BETTS PS-1
NS	1892	REFLECTOR, RECTANGULAR, RED, SHATTER PROOF
NS	11427	HOOK, 7-TON, W/SAFETY LATCH
NS	11393	SAFETY LATCH, 7-TON HOOK
NS	7655	U-BOLT KIT, RT, SAFETY CHAIN
27	10708	SUPPORT, FIFTH WHEEL
28	10713	PEDESTAL, FIFTH WHEEL



Tandem Suspension Assembly





Tandem Suspension Assembly

TANDEM CONVERTER DOLLY - SUSPENSION MODEL CTL

Item	Part Nbr.	Description
1	5708	EQUALIZER HANGER
2	11031 / 5671	FRONT SPRING HANGER / REAR SPRING HANGER
3	10509	EQUALIZER WELDMENT
4	1095	SHAFT, EQUALIZER PIVOT
5	1035	BEARING, EQUALIZER ASSY
6	10972	O-RING, 1.98 ID X .139
7	16708	SPRING, 7 LEAF, W/LONG REBOUND, LOW ARCH
8	1204	BUSHING, SPRING BOOT, RUBBER, PAIR
8	12171	BUSHING, SPRING BOOT, URETHANE, PAIR
9	1036	RETAINER, SPRING BOOT
10	10665	AXLE ALIGNMENT PAD ASSY, (3-1/2' Axle Height)
11	10661	SPRING SEAT WELDMENT, ADJUSTABLE, (3-1/2" Axle Height)
12	10290	PRESSURE PLATE, 3 LEAF SPRING
13	3591	U-BOLT, 1 X 5 X 10
13	12141	U-BOLT ASSY, 1 X 5 X 10, W/NUTS & WASHERS
14	1089	CAPSCREW, 1-1/8-7 UNC X 8, HX, GR 8, PLTD
15	11622	CAPSCREW, 5/8-11 UNC X 7, HX, GR 8, PLTD
16	7904	CAPSCREW, 1/2-3 UNC X 6.5, HX, GR 8, PLTD
17	3125	SETSCREW, 5/8-11 UNC X 2-1/4, SQHD, OVALPT, PLTD
18	1090	NUT, 1-1/8-7 UNC, METAL LOCK, HX, GR C, PLTD
19	3398	NUT, 1-14 UNF, THICK, HX, GR 8, PLTD
20	1164	NUT, 5/8-11 UNC, METAL LOCK, HX, GR C, PLTD
21	1700	NUT, 5/8-11 UNC, JAM, HX, GR 5, PLTD
22	1942	NUT, 1/2-13 UNC, METAL LOCK, HX, GR C, PLTD
23	1540	WASHER, 1-1/32 X 1-5/8 X .0625, FLAT, HRND, PLTD
24	1172	WASHER, 5/8, FLAT, F436, HRND, PLTD
25	3438	WASHER, 1/2, FLAT, A325, HRND, PLTD

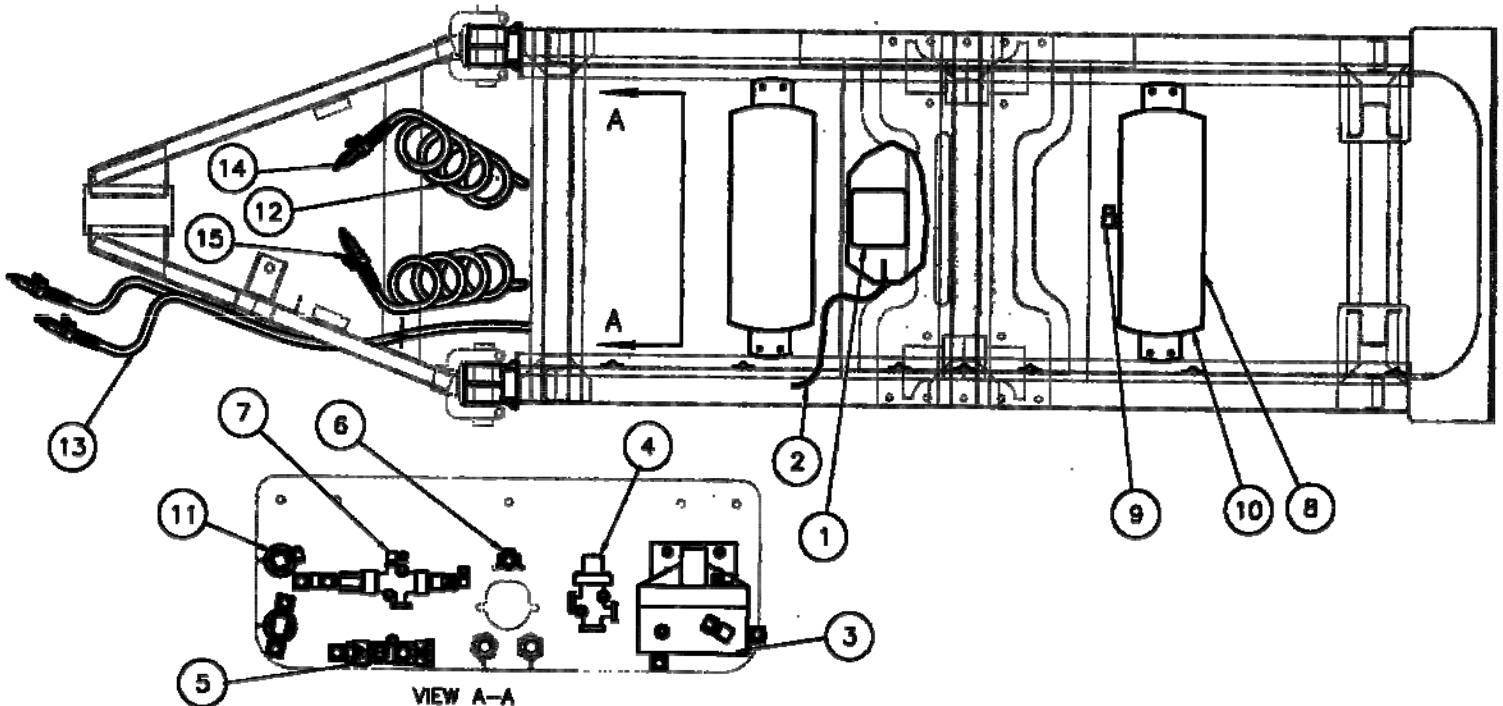


Tandem Air System

TANDEM CONVERTER DOLLY - AIR SYSTEM MODEL CTL

Item Part Nbr. Description

1	10074	VALVE, RELAY, ABS CONTROL, MERITOR/WABCO
2	10348	HARNESS, ECU PIGTAIL
3	6688	VALVE, RELAY, R-12P WITH BRACKET
4	6294	PRESSURE PROTECTION VALVE, PR-E, BENDIX
5	9858	VALVE, EMERGENCY CONTROL, 110376 SEALCO
6	1278	VALVE, PUSH-PULL, PP-1
7	6302	VALVE, SYNCHRO, SV-4, W/BREATHER & CHECK VALVE
8	1337	AIR RESERVOIR, 9508 SERIES, 1488 CUBIC INCHES
9	1772	VALVE, CHECK, SC-3, 1/2" NPT, BENDIX
10	1771	VALVE, CABLE DRAIN, 1/4" NPT
11	1181	BULKHEAD FITTING, BRASS
12	4081	HOSE, AIR, COILED, 12' WORKING LENGTH, 6"/12" PAIR
13	QUOTE	HOSE, AIR, 3/8", RUBBER, 1/2 X 1/2 CONN (other sizes available)
14	5854	GLADHAND, SERVICE, W/FULL FACE BLUE SEAL
15	5855	GLADHAND, EMERGENCY, W/FULL FACE RED SEAL
NS	8818	DELAY CHAMBER





Item Part Nbr. Description

1	10318	CABLE, 7-WAY, 12" STRAIGHT, W/PLUGS, ABS GREEN
2	10980	CORD, 8' EXTENSION, 2 OR 4 LIGHT SYSTEM HARNESS
3	9563	GROMMET, LAMP, TRUCKLITE, MODEL 30
4	9562	LENS, AMBER, TRUCKLITE, ABS
5	2509	GROMMET, LAMP, GROTE
6	2508	LAMP, RED, GROTE
7	5583	HARNESS, REAR, 4-LIGHT
7	5585	HARNESS, REAR, 2-LIGHT
8	10112	HARNESS, FRONT, WYE, SEALED, 132", ABS

