

VEHICLE CHARACTERISTICS

NOMENCLATURE: FIFTH-WHEEL TACTICAL TRAILER (FTT)

DATE: JUL 2007



DESIGNATIONS

VEHICLE DATA (Subject to Change)

General

Maximum Vehicle Weight.....	7000 lb (3175 kg)
Curb Weight.....	1950 lb (885 kg)
Maximum Payload Capacity.....	5050 lb (2290 kg)
Hull.....	Unitized body construction using aircraft grade aluminum and HSLA steel

Dimensions

Overall Length.....	197.0 inches (500 cm)
Overall Width.....	85.0 inches (216 cm)
Overall Height.....	82.0 inches (208 cm)
Track Width.....	72.5 inches (184 cm)
Drawbar Length.....	152.6 inches (388 cm) (from axle center to kingpin center)
Kingpin Height.....	60.0 inches (152 cm) (empty)
Deck Height.....	36.0 inches (86 cm) (empty...loaded deck height will vary by system configuration)
Ground Clearance.....	16.2 inches (41 cm)

Running Gear

Suspension Type.....	Fully independent trailing arm air-ride suspension featuring a field-replaceable wheel spindle
Spring Media.....	Progressive rate commercial Class 8 truck air bags, adjustable
Shock Absorbers.....	Telescopic, direct acting, one per wheel
Wheels.....	16.5 X 8.25, two piece steel, HMMWV compatible, 8 on 6.5 inch bolt pattern
Tires.....	37X12.50R16.5 Goodyear Military Wrangler M/T, with 30-mile runflat inserts, HMMWV compatible
Brakes.....	Proprietary microprocessor controlled electric-over-hydraulic brake actuator specifically designed for 24V military systems with blackout capability. 12 inch x 2 inch free backing hydraulic drum brakes with automatic breakaway actuation. Independent lever-operated left and right side mechanical parking brakes.
Electrical System.....	24 Volt DC sealed lighting system with blackout convoy lights, 12 pin connector plug mates with STABLE 5 th Wheel System. Onboard battery for brake controller actuation and breakaway capability.

Performance

Max Speed (Primary Roads).....	TBD
Max Speed (Secondary Roads).....	TBD
Max Speed (Off Road).....	TBD
Departure Angle.....	40 degrees
Turning Angle.....	90 degrees
Fording.....	Limited only by customer configuration

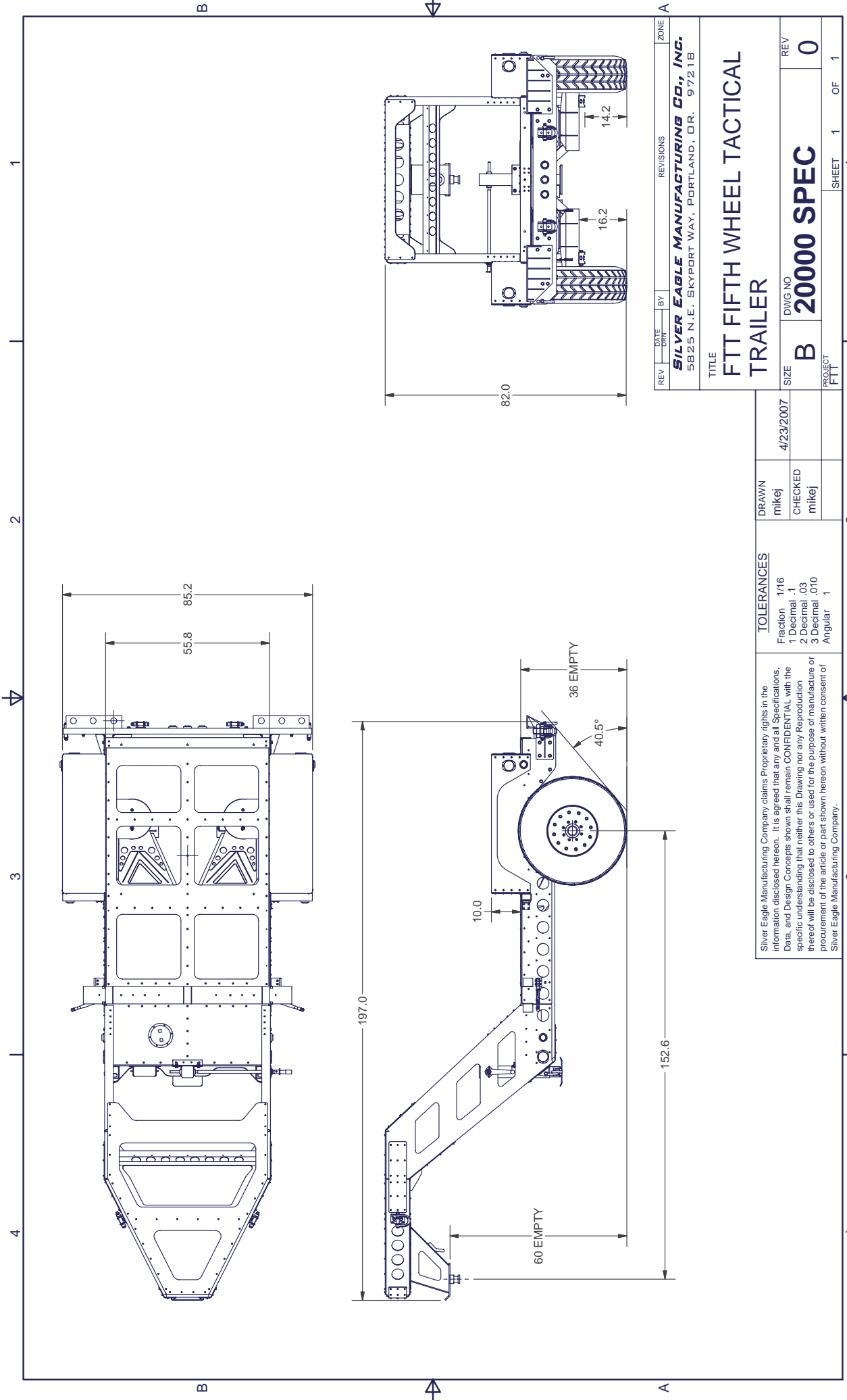
SILVER EAGLE

MANUFACTURING COMPANY

5825 N.E. Skyport Way

Portland, OR 97218-1249

Phone: (800) 547-6792 Fax: (503) 335-2171



REV	DATE	BY	REVISIONS	ZONE
				A

SILVER EAGLE MANUFACTURING CO., INC.
 5825 N.E. SKYPORT WAY, PORTLAND, OR. 97218

TITLE
FTT FIFTH WHEEL TACTICAL TRAILER

SIZE	DWG NO	REV
B	20000 SPEC	0

PROJECT
 FTT

SHEET 1 OF 1

TOLERANCES	DRAWN
Fraction 1/16	mikej
1 Decimal .1	CHECKED
2 Decimal .03	mikej
3 Decimal .010	
Angular 1	

Silver Eagle Manufacturing Company claims Proprietary rights in the information disclosed herein. It is agreed that any and all Specifications, Data, and Design Concepts shown shall remain CONFIDENTIAL with the specific understanding that neither this Drawing nor any Reproduction thereof will be disclosed to others or used for the purpose of manufacture or procurement of the article or part shown herein without written consent of Silver Eagle Manufacturing Company.